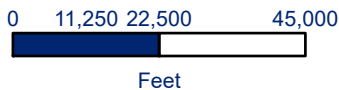
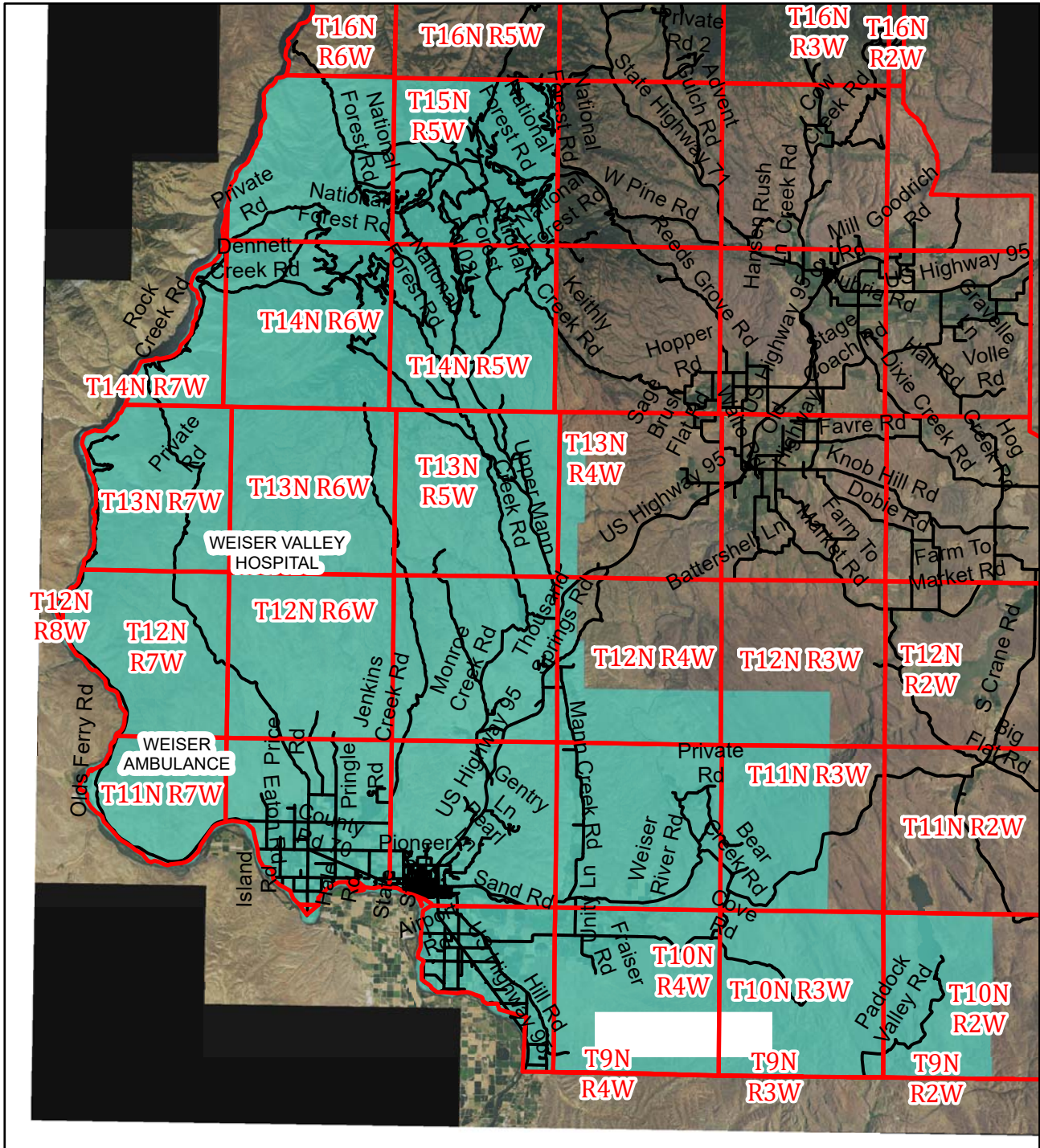




THIS MAP CREATED BY THE OFFICE OF THE WASHINGTON COUNTY ASSESSOR





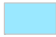

AMBULANCE & HOSPITAL DISTRICT



1 inch = 29,537.9 feet

BASED ON GOVERNMENT SURVEYS & OFFICIAL RECORDS ON FILE AT THE OFFICE OF THE COUNTY RECORDER OF WASHINGTON COUNTY, IDAHO. FOR ASSESSMENT PURPOSES ONLY DOES NOT GUARANTEE BOUNDARIES

Legend

-  Township
-  Streets
-  AMBULANCE DISTRICT
-  HOSPITAL DISTRICT