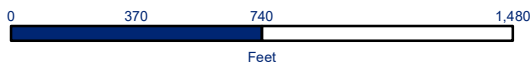
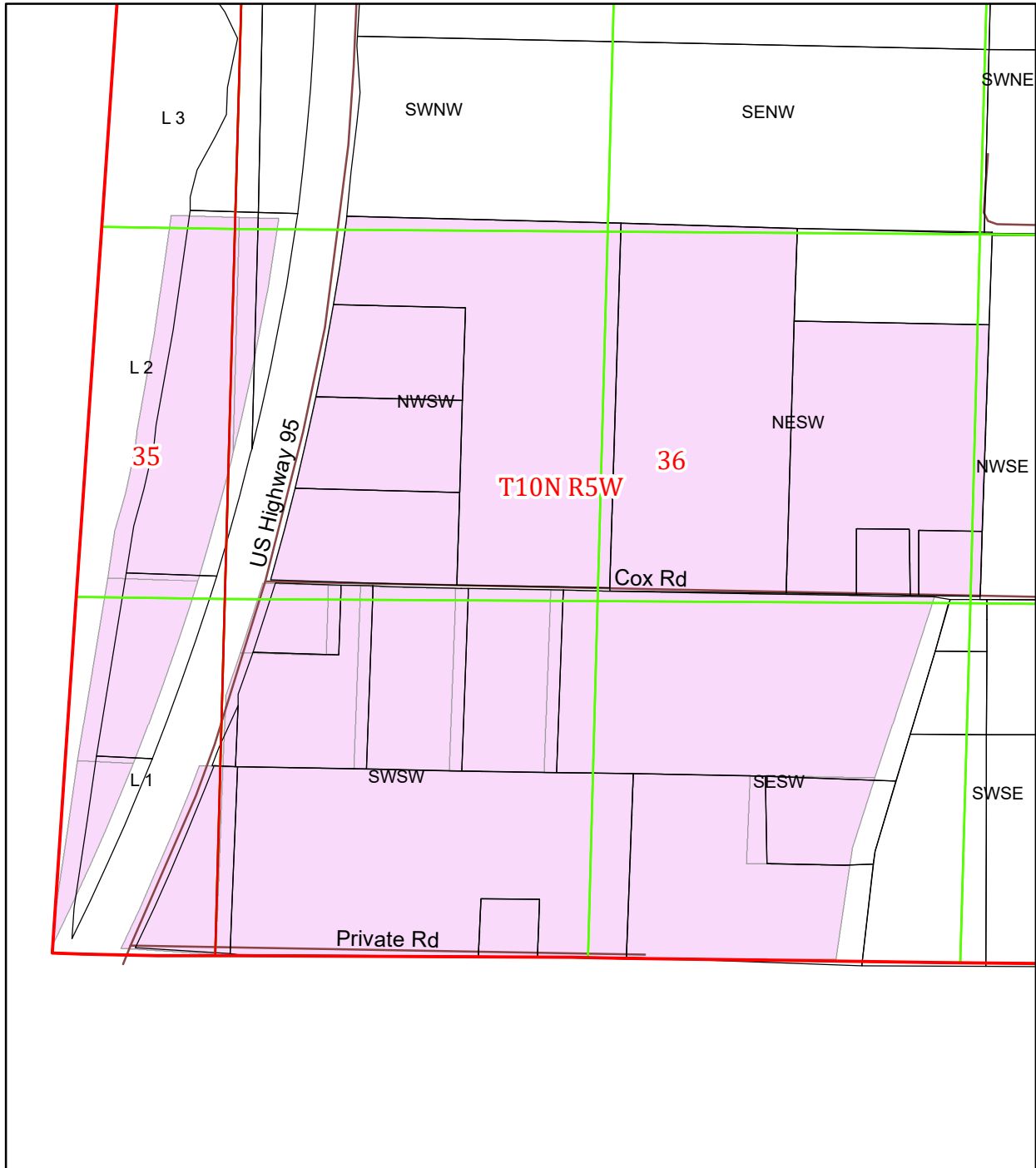




THIS MAP CREATED BY THE OFFICE OF THE WASHINGTON COUNTY ASSESSOR



CANYON COUNTY DRAIN IRRIGATION DISTRICT



1 inch = 0.1 miles

BASED ON GOVERNMENT SURVEYS & OFFICIAL RECORDS ON FILE AT THE OFFICE OF THE COUNTY RECORDER OF WASHINGTON COUNTY, IDAHO. FOR ASSESSMENT PURPOSES ONLY DOES NOT GUARANTEE BOUNDARIES

Legend

- Township
- Sections
- Parcel Lines
- Streets
- CANYONCODRAINDIST