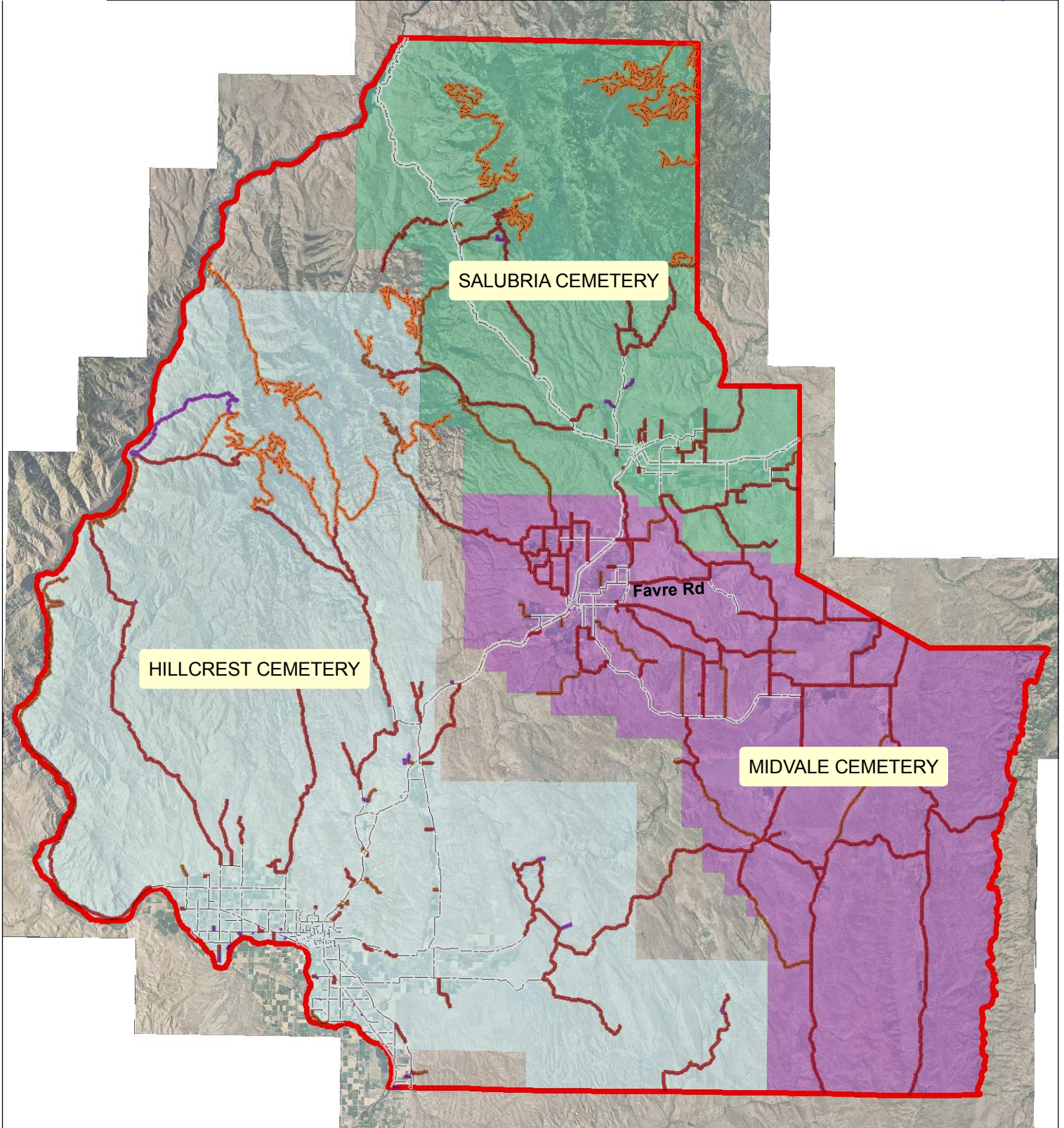




# CEMETERY DISTRICTS

THIS MAP CREATED BY THE OFFICE OF THE  
WASHINGTON COUNTY ASSESSOR



1 inch = 32,271.4 feet



BASED ON GOVERNMENT SURVEYS & OFFICIAL RECORDS  
ON FILE AT THE OFFICE OF THE COUNTY RECORDER OF  
WASHINGTON COUNTY, IDAHO.  
FOR ASSESSMENT PURPOSES ONLY  
DOES NOT GUARANTEE BOUNDARIES

Legend					
	TOWNSHIP LINES		STATE HWY		GRAVEL/DIRT
	SECTION LINES		PAVED		NATIONAL FOREST
	1/4 SECTION LINES		PAVED		PRIVATE
	RIVERS		GRAVEL		CITY